



Creazione di un Ambiente Domestico Sicuro

www.progetto-cads.it

Roberto Nascimbene – IUSS Pavia

Criteria per la classificazione sismica degli elementi non-strutturali



“DISSEMINATION”

XIX ANIDIS Conference, Seismic Engineering in Italy

A Shake Table Testing Campaign of Electrical Cabinets

Roberto J. Merino^a, Filippo Dacarro^b, Paolo Dubini^b, Francesco Graziotti^{b,c}, Luca Grottoli^b, Igor Lanese^b, Daniele Perrone^{a,d}, Maria Rota^b, Roberto Nascimbene^a, Andre Filiatrault^a

^aUniversity School for Advanced Studies IUSS Pavia, Pavia, Italy

^bEuropean Centre for Training and Research in Earthquake Engineering (EUCENTRE), Pavia, Italy

^cDepartment of Civil Engineering and Architecture, University of Pavia, Pavia, Italy

^dUniversity of Salento, Lecce, Italy



EUCENTRE
FOR YOUR SAFETY.



**UNIVERSITÀ
DEL SALENTO**



IUSS
Scuola Universitaria Superiore Pavia



ESEMPIO ILLUSTRATIVO: QUADRI ELETTRICI



a)



b)



c)



d)



EUCENTRE
FOR YOUR SAFETY.



**UNIVERSITÀ
DEL SALENTO**



IUSS
Scuola Universitaria Superiore Pavia



ESEMPIO ILLUSTRATIVO: QUADRI ELETTRICI



EUCENTRE
FOR YOUR SAFETY.



**UNIVERSITÀ
DEL SALENTO**

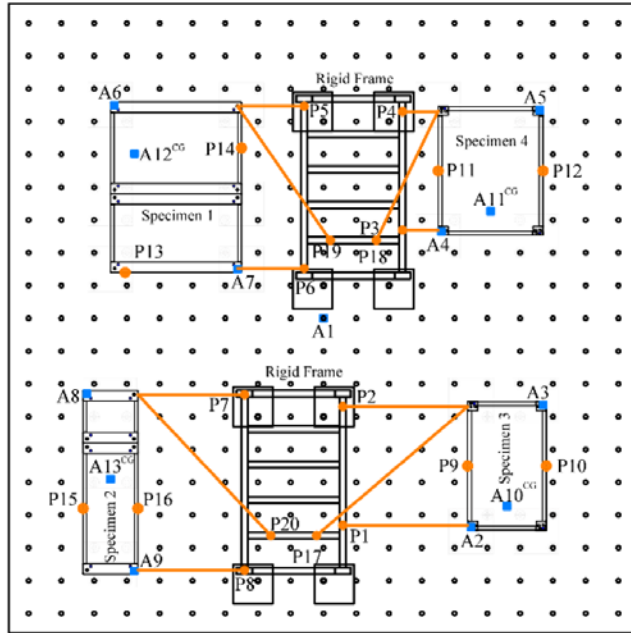


IUSS
Scuola Universitaria Superiore Pavia

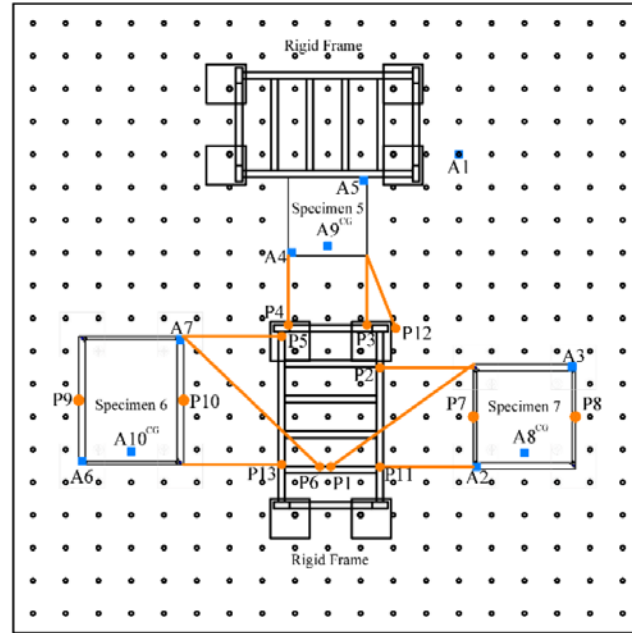


STRUMENTAZIONE CONFIGURAZIONE SPERIMENTALE

Legend: ■ Accelerometer ● Horizontal Potentiometer ● Vertical Potentiometer ^{CG} Installed at the elevation of center of gravity



a)



b)



EUCENTRE
FOR YOUR SAFETY.



**UNIVERSITÀ
DEL SALENTO**



IUSS
Scuola Universitaria Superiore Pavia



TEST SPERIMENTALE



EUCENTRE
FOR YOUR SAFETY.



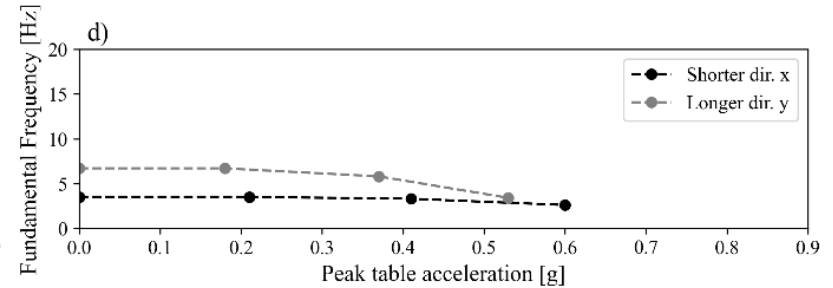
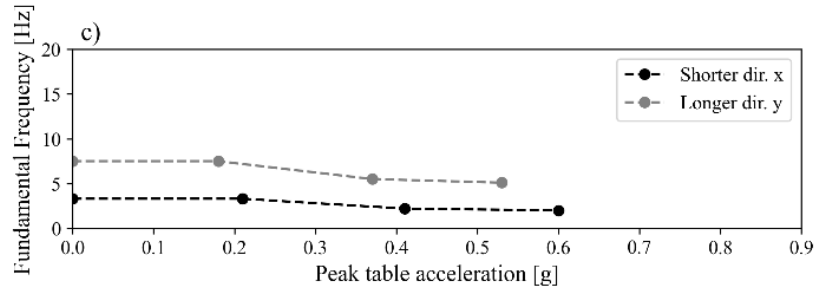
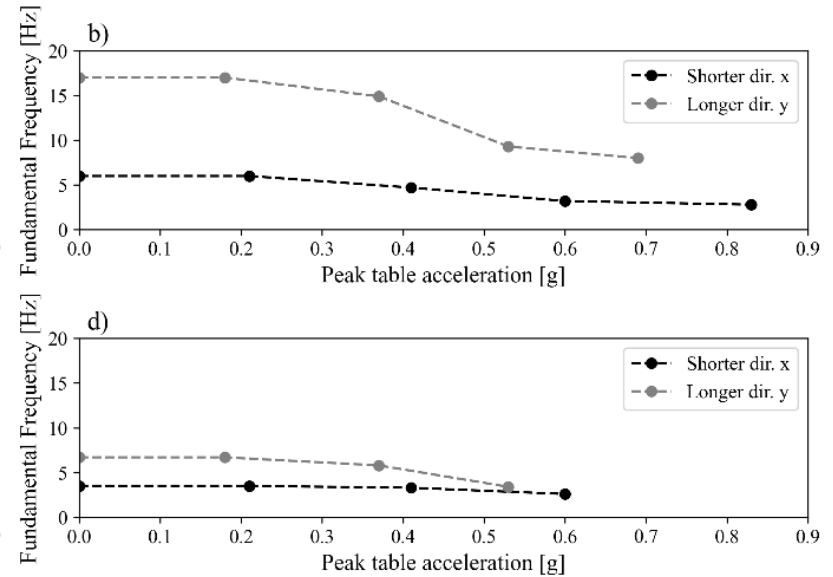
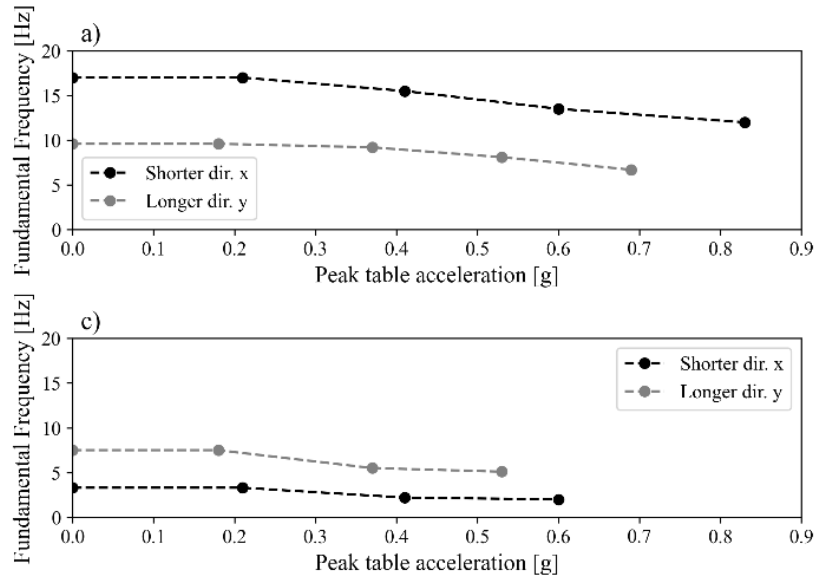
**UNIVERSITÀ
DEL SALENTO**



IUSS
Scuola Universitaria Superiore Pavia



“DAMAGE ASSESSMENT”



DANNI OSSERVATI



EUCENTRE
FOR YOUR SAFETY.



**UNIVERSITÀ
DEL SALENTO**



IUSS
Scuola Universitaria Superiore Pavia



CONCLUSIONI

1. A seismic classification procedure for non-structural building elements based on shake-table qualification testing has been proposed;
2. The Required Response Spectra is based on ISO 13033 modified according to Eurocode 8;
3. The procedure considers performance-based seismic design concepts in a simplified way by allowing for two performance objectives (life-safety and continuous operation) for nonstructural elements;
4. The effectiveness of proposed classification procedure was appraised through the shake table testing of four electrical cabinets;
5. The procedure can be generalized in order to be applied in other countries.



EUCENTRE
FOR YOUR SAFETY.



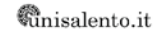
**UNIVERSITÀ
DEL SALENTO**



IUSS
Scuola Universitaria Superiore Pavia



Partner



Creazione di un Ambiente Domestico Sicuro
www.progetto-cads.it